

# Spidex

PHYTOSEIULUS PERSIMILIS



## The best choice for spider mite control



**Spidex (*Phytoseiulus persimilis*) is produced by Koppert Biological Systems since 1967. It is used for the biological control of the two-spotted spider mite.**

### Target

Two spotted spider mite (*Tetranychus urticae*). All stages, preferring younger stages.  
The predatory mite can only survive on two spotted spider mites (*Tetranychus spp.*).

### Unit of packaging

- 500 ml bottle, containing 10,000 adults
- 1000 ml bottle, containing 4,000 adults
- Each bottle contains adults mixed with wood-chips

### When to Use Spidex?

Use Spidex preventatively and at the first sign of pest presence.

### Introduction

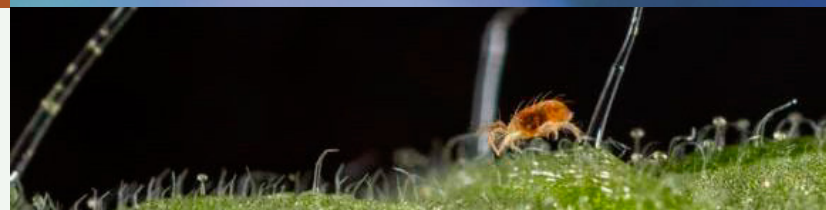
- Turn and shake the bottle gently before use
- Sprinkle material on leaves or pour into application boxes (Dibox)
- In low crops it is possible to distribute Spidex mechanically by means of the Airbug mite blower

### Appearance

- Adults: bright red, very active, spherical, stands high on its legs
- Eggs: oblong, first pink and transparent, later on darker, twice as big as spider mite eggs
- Larvae/nymphs: pale to light red

### Mode of action

Adult predatory mites and nymphs search actively for their prey and suck them dry.



### Visual effect

Adult red spider mites that have been eaten change color from brown to black (in tomato) and can be identified as tiny black dots on the leaves. This should not be confused with living, light-brown to dark-red spider mites.

### Environmental conditions

Relative humidity should be greater than 75% and the temperature above 20°C/68°F for some hours of the day. *Phytoseiulus persimilis* does not enter diapause.

### Storage and handling

Biological beneficials have a very short life expectancy and therefore need to be introduced into the crop as soon as possible after receipt. Storing them for a period can have a negative impact on their quality and is only possible under the conditions described below. Koppert B.V. is not liable for any loss of quality if the product is stored for longer than recommended and/or under incorrect conditions.

- Storage after receipt: 1-2 days
- Storage temperature: 8-10°C/47-50°F
- In the dark (bottle horizontally)

### Important!

The introduction rates of this product should be adjusted to the mode of action of the product and the results that can be expected in the crop where the product is applied. Your local Koppert consultant or recognized distributor will be able to advise you further.

Spidex	preventive	light curative	heavy curative
rate	2/m <sup>2</sup>	6/m <sup>2</sup>	20-50/m <sup>2</sup>
m <sup>2</sup> /unit	1,000	300	40-100
interval (days)	21	7	7
frequency	–	1-2x	2x
remark	–	–	introduce in infested area only

**Important!** Only use products that are permitted in your country/state and crop. Check local registration requirements. Koppert Biological Systems cannot be held liable for unauthorized use.